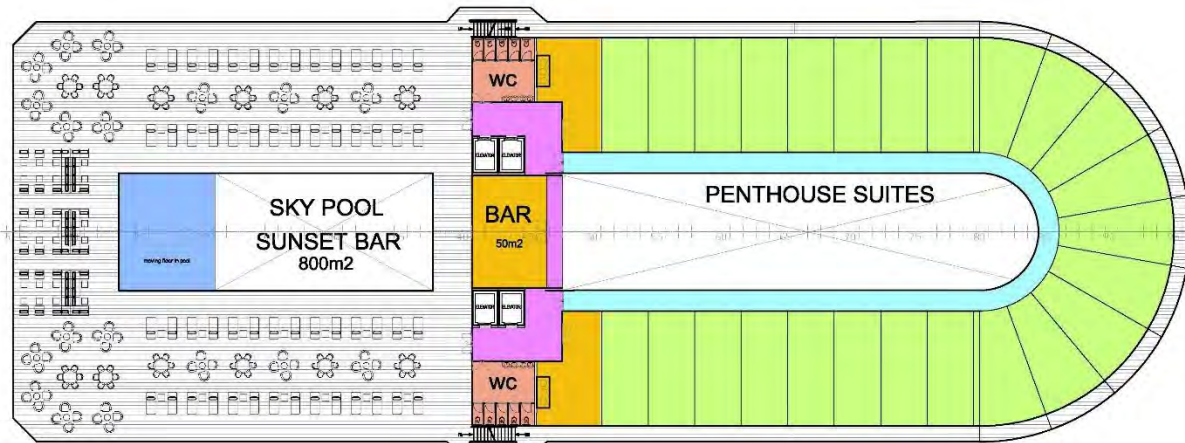


- STAIRCASE
- PUBLIC SPACES
- CLIENT CORRIDORS
- CREW CORRIDORS
- CLIENT CABINS
- SERVICE SPACES
- CREW SPACES
- TECHNICAL SPACES
- SECURITY
- TECK DECK



22x30m² = 44 guests
2x 60m² = 4 guests
total 48 guests

Deck 10
(deck 9 in 700 pax version)



51x15m² = 102 guests
26x 12.5m² = 52 guests
154 guests

Deck 8 and 9 similar
= with 10 decks total 854 pax
= with 9 decks total 700 pax



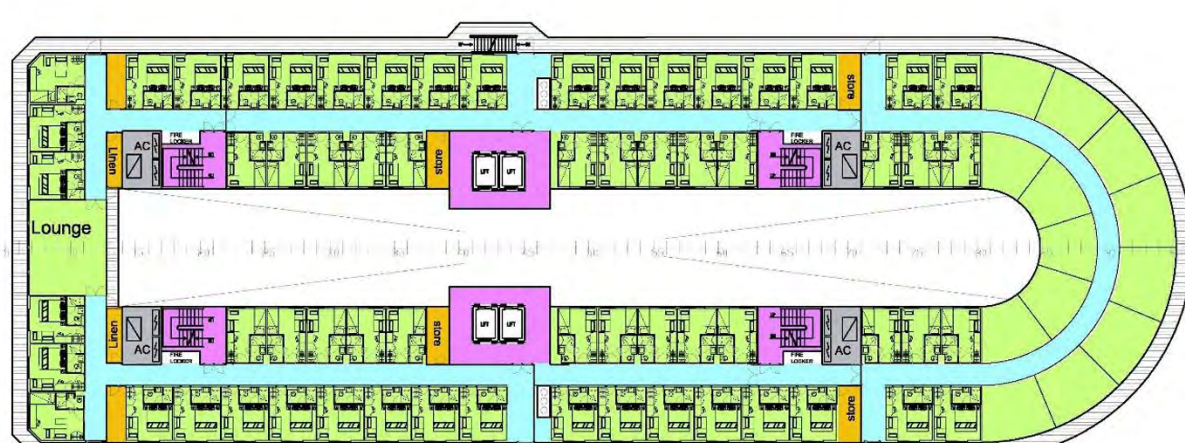
51x15m² = 102 guests
26x 12.5m² = 52 guests
154 guests

Deck 7



51x15m² = 102 guests
26x 12.5m² = 52 guests
154 guests

Deck 6



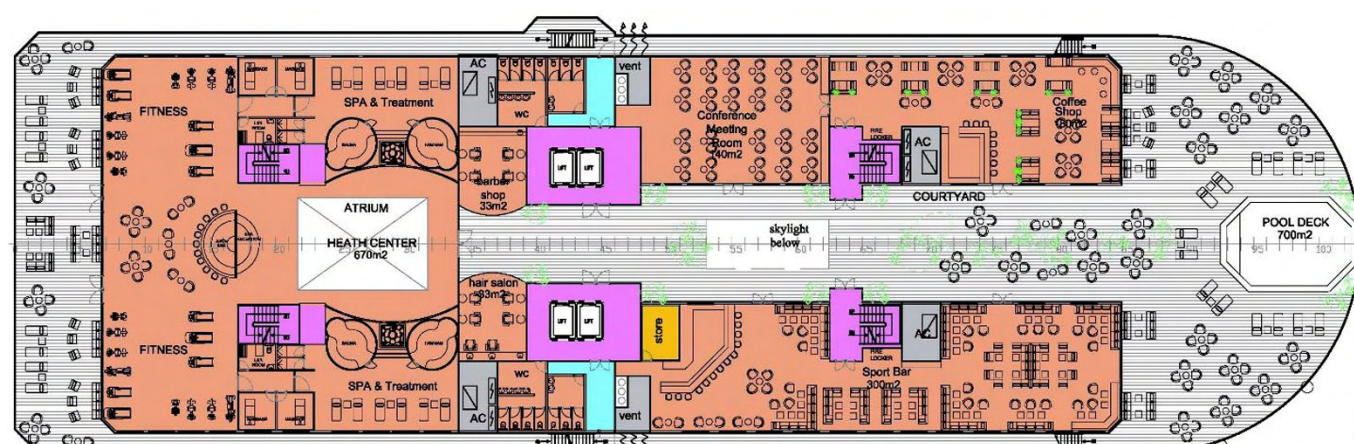
51x15m² = 102 guests
26x 12.5m² = 52 guests
154 guests

Deck 5

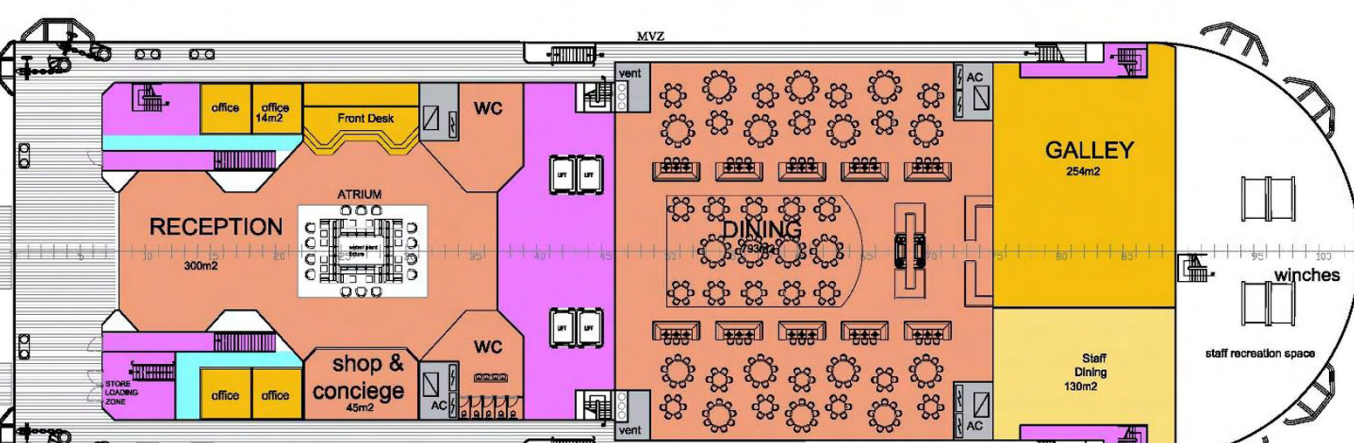


STAFF CABINS
76x 12.5m² cabins
16 singles & 60 doubles
136 staff

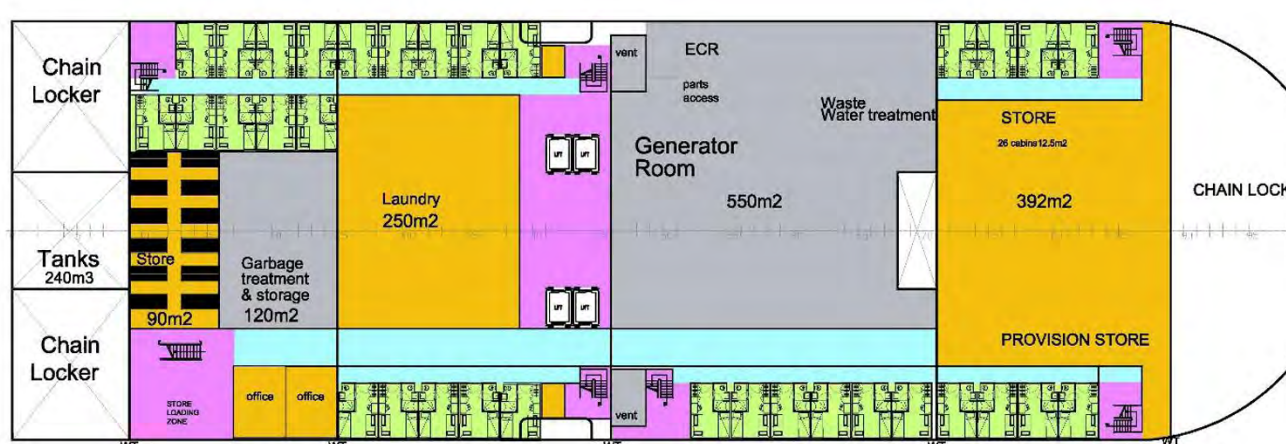
Deck 4



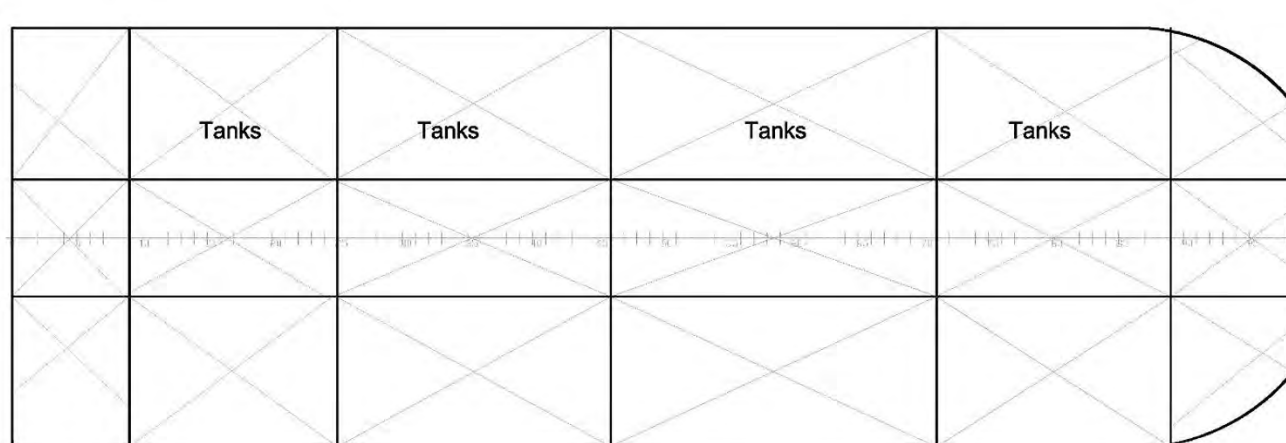
Deck 3



Deck 2



Deck 1



DOUBLE BOTTOM